

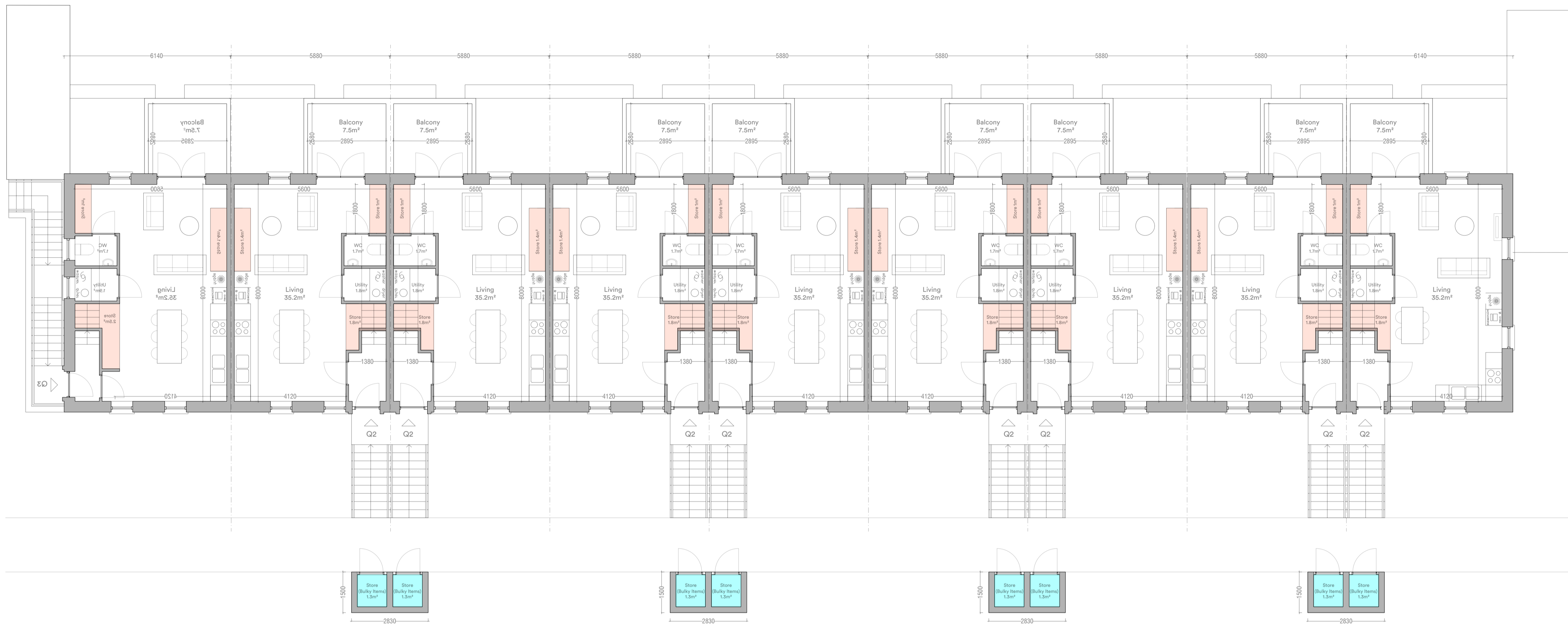


View of Bulky Storage to Front of Duplex Entrance



View of Bulky Storage to Side Access Duplex

Duplex Block A First Floor



**Response to RFI Item 1 (c)**

- Storage areas provided in line with Appendix 1 of Sustainable Urban Housing: Design Standards for New Apartments 2023
- Storage area for bulky items provided in line with Section 3.32 of Sustainable Urban Housing: Design Standards for New Apartments 2023 (Surplus to minimum standard storage provision)

Type Q1		
1 Bed / 2 Person		
Total Floor Area	52.7m <sup>2</sup>	(45m <sup>2</sup> )
Total Living Area	25.6 m <sup>2</sup>	(23m <sup>2</sup> )
Total Bedroom Area	12.6m <sup>2</sup>	(11.4m <sup>2</sup> )
Total Storage Area	4.3m <sup>2</sup>	
Standard Storage Area	3m <sup>2</sup>	(3m <sup>2</sup> )
Bulky Storage Area	1.3m <sup>2</sup>	
Private Amenity	7m <sup>2</sup>	(5m <sup>2</sup> )
Type Q2		
2 Bed / 4 Person		
Total Floor Area	89.6m <sup>2</sup>	(73m <sup>2</sup> )
First Floor Area	44.8m <sup>2</sup>	
Second Floor Area	44.8m <sup>2</sup>	
Total Living Area	35.2m <sup>2</sup>	(30m <sup>2</sup> )
Total Bedroom Area	26.7m <sup>2</sup>	(24.4m <sup>2</sup> )
Total Storage Area	9.5m <sup>2</sup>	(6m <sup>2</sup> )
Standard Storage Area	6.3m <sup>2</sup>	(6m <sup>2</sup> )
Bulky Storage Area	4.8m <sup>2</sup>	
Private Amenity	7m <sup>2</sup>	(7m <sup>2</sup> )
Type Q3		
2 Bed / 4 Person		
Total Floor Area	89.6m <sup>2</sup>	(73m <sup>2</sup> )
First Floor Area	44.8m <sup>2</sup>	
Second Floor Area	44.8m <sup>2</sup>	
Total Living Area	30m <sup>2</sup>	(30m <sup>2</sup> )
Total Bedroom Area	25.7m <sup>2</sup>	(24.4m <sup>2</sup> )
Total Storage Area	9.5m <sup>2</sup>	(6m <sup>2</sup> )
Standard Storage Area	6m <sup>2</sup>	(6m <sup>2</sup> )
Bulky Storage Area	6.2m <sup>2</sup>	
Private Amenity	7.4m <sup>2</sup>	(7m <sup>2</sup> )

**Response to RFI Item 1 (d)**  
A communal 3 bin system has been provided for the apartment dwellings proposed

**Response to RFI Item 1 (d)**  
A communal 3 bin system has been provided for the apartment dwellings proposed



Duplex Block A Ground Floor

Minimum standards shown in parentheses  
Refer to site layout for handing and orientation  
Universal Design notes shown in green